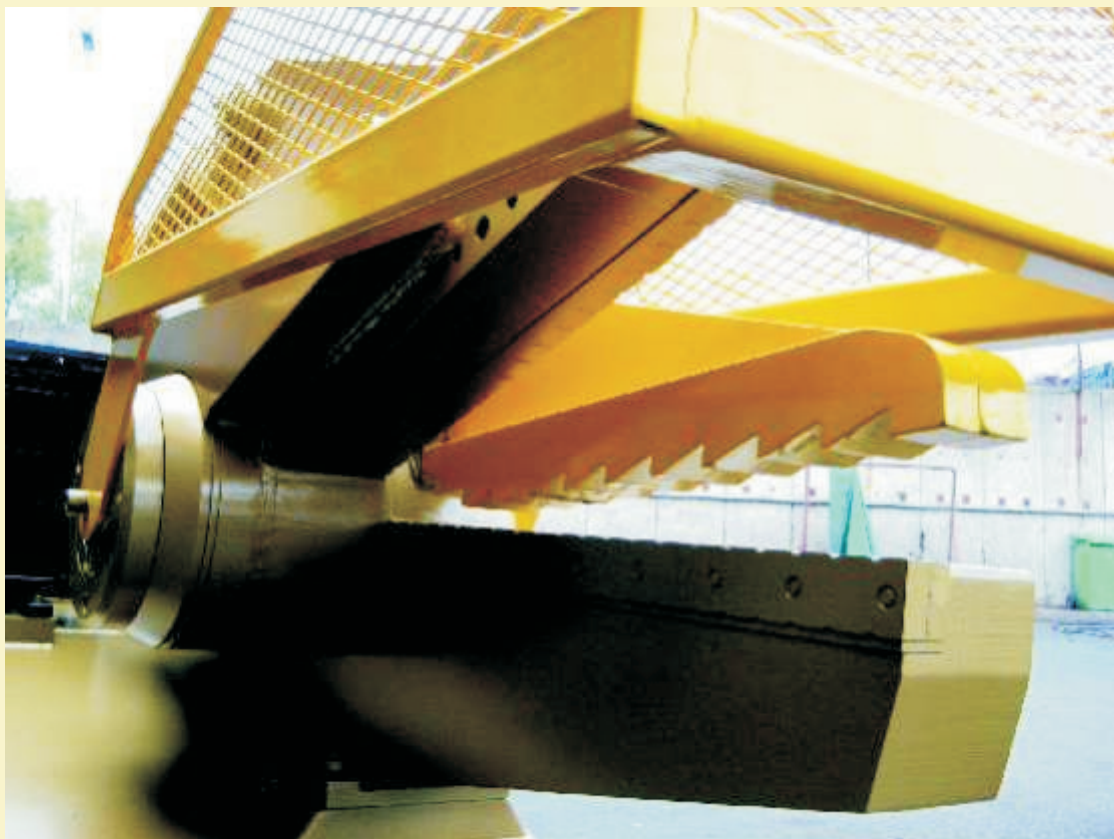


The **McIntyre 900**

Available as electric or diesel, this powerful yard shear will cut up to 89mm round bar. It's 920mm, blade length will allow you to handle over-sized material with ease



Strip Technology

3700 N. Commerce Fort Worth, Tx. 76106

817.626 1504 email:info@striptec.com

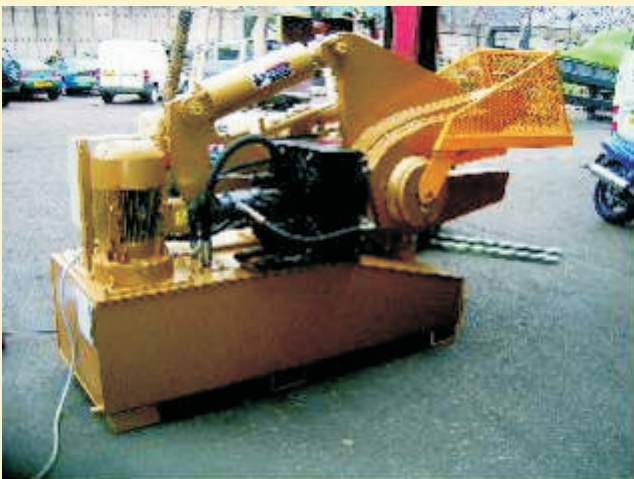
The McIntyre 900 Shear

**A rugged and
reliable workhorse
for just about every
yard application**

The McIntyre 900 is a 920mm blade hydraulic shear. With a massive cutting capacity of up to 89mm diameter on mild steel bar, major features of the 900 include: an easy to operate control system which gives automatic continuous stroke as an alternative to foot pedal operation; a shearing height which will reduce operator fatigue; and extra heavy-duty jaw pivot bearings, which will ensure a long machine life.

ADDITIONAL OPTIONS

Optional equipment includes; forced air cooling for hot climates, and oil-immersed tank heaters for cold climates. In addition, the 900 has been designed specifically for the cutting of aluminium and ingot additions. This machine includes an additional safety table and screen attachment and is ideal for cutting oversized material. A diesel version of the 900 is also available.



With optional oil cooler installed

Strip Technology, Inc.

3700 N. Commerce
Fort Worth, Texas
Tel: 817.626.1504
Fax: 817.625.2207
email: info@striptec.com
www.striptec.com

Technical Data

900 Shear

Blade length 920mm

Blade opening Tip to Tip 440mm

Weight (electric version, with oil) 4650kg

Motor Size

20hp (15kW) 3 phase

Can also be supplied with diesel motor

Maximum shear force 240 Tonnes

Speed (3 phase version)

14 cuts per minute jaws quarter open

7 cuts per minute jaws fully open

Length 3,160mm

Width 1,030mm

Height 1,680mm

Oil capacity 600litres

Oil Type ISO 46

Cutting Capacity

Mild Steel 43A

88.9mm, 3 1/2" Dia



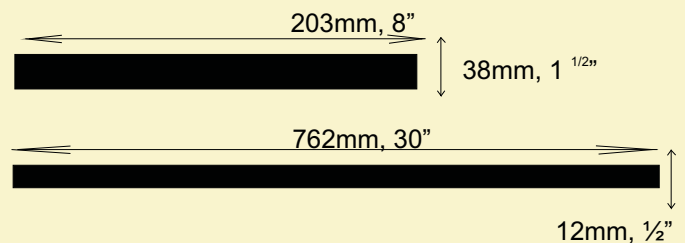
Round bar

Flats

80mm, 3 1/8"



Square bar



150 6" shear



500 20" shear



200 8" shear



320 12" shear



4000 16" shear



407 16" shear